

An underwater photograph of a coral reef. The scene is dominated by large, flat, porous coral structures in shades of blue and purple. Several small fish are visible swimming around the coral. The background is a deep, dark blue, suggesting a deep-sea environment.

What is it?

- an “inventory” of large marine ecosystem (LME) science for southern Gulf of Mexico (GoM)
- annotated listings (metadata) of:
 - literature,
 - research programs, and
 - data resources

Three Thematic Areas

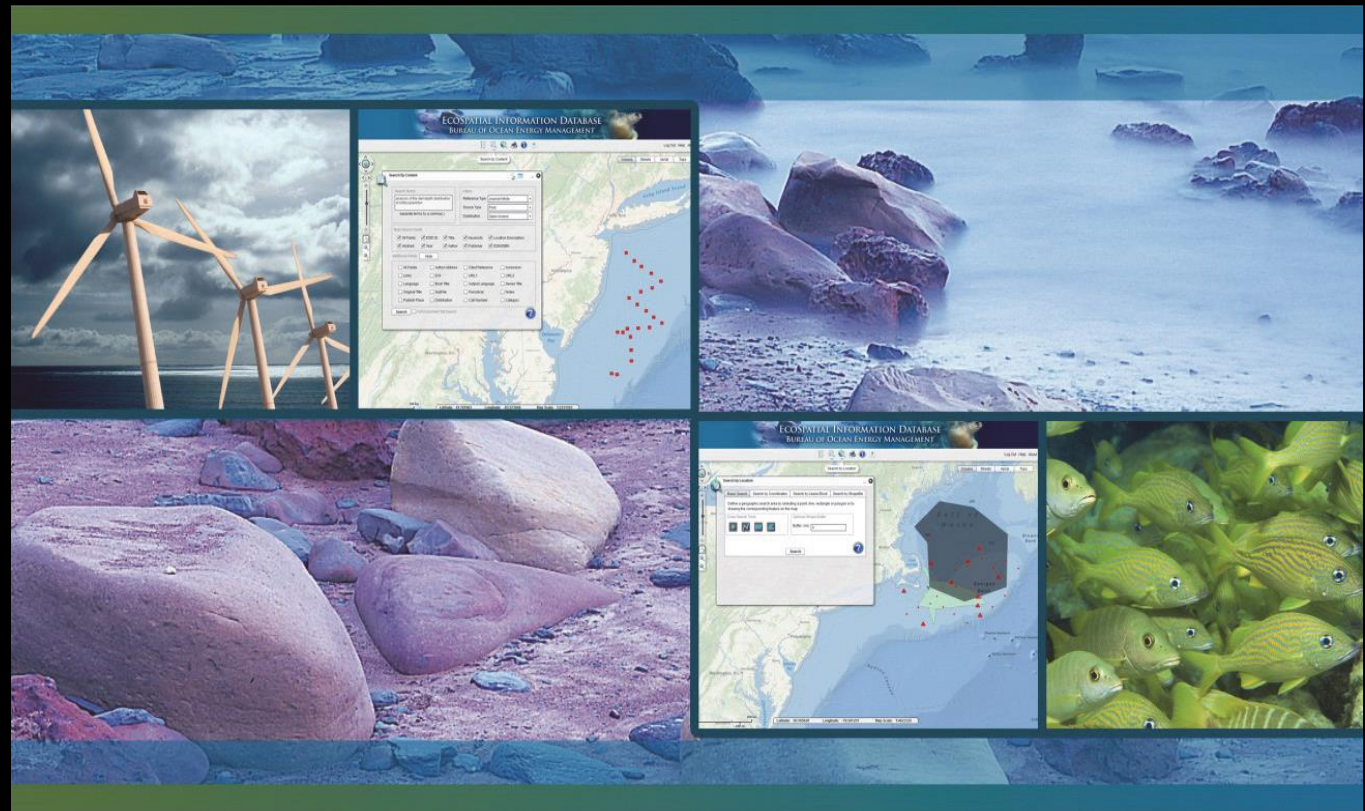
The background of the slide is an underwater scene of a coral reef. The water is a deep blue, and the coral is a lighter, textured blue. Several small fish are visible swimming around the coral.

**Baseline
Studies**

**Fates and
Effects
Studies**

**Env.
Monitoring
Studies**

Guidance from BOEM ESID



Online Data Collection



TEXAS A&M
UNIVERSITY
CORPUS
CHRISTI

HARTE
RESEARCH INSTITUTE
FOR GULF OF MEXICO STUDIES

GOM-WIR INVENTORY

Publications and Literature / Publicaciones y Literatura

This form is for entering information about publications for the GOM-WIR Inventory of large marine ecosystem (LME) science in the southern Gulf of Mexico. Note that "publications" should be interpreted broadly to include not just peer-reviewed publications, but also "gray" literature with an LME focus, too. While using this form, "tooltips", i.e. context-sensitive information such as a definitions, explanations, or examples, are available by hovering the mouse cursor over blue text. For further information and tips about using this form, take a look at the [notes about this form](#).

Este formulario sirve para añadir información sobre publicaciones para el Inventario GOM-WIR de ciencia del gran ecosistema marino (*large marine ecosystem*: LME) del sur del Golfo de México. Dese cuenta que el término "publicaciones" debe ser interpretado ámpliamente para incluir no tan sólo literatura publicada en revistas arbitradas, sino también la literatura "gris" enfocada en los LME. Mientras usa el formulario, "tooltips", es decir información dependiente del contexto, como definiciones, explicaciones o ejemplos, está disponible al pasar el cursor del ratón sobre el texto azul. Para más información y consejos acerca de cómo usar este formulario, consulte las [notas acerca de este formulario](#).

* **Contributor**

[Colaborador]:

* **Contact Info**

[Información de Contacto]:

* **BOEM Thematic Areas**

[Áreas temáticas del BOEM]

- Baseline Studies [Estudios de Punto de Referencia]
- Fates and Effects Studies [Estudios de Destino y Efectos]
- Environmental Monitoring Studies [Estudios de Monitoreo Ambiental]
- Coral and Hardbottom [Coral y Fondo Duro]
- Demersal Fish [Peces Demersales]

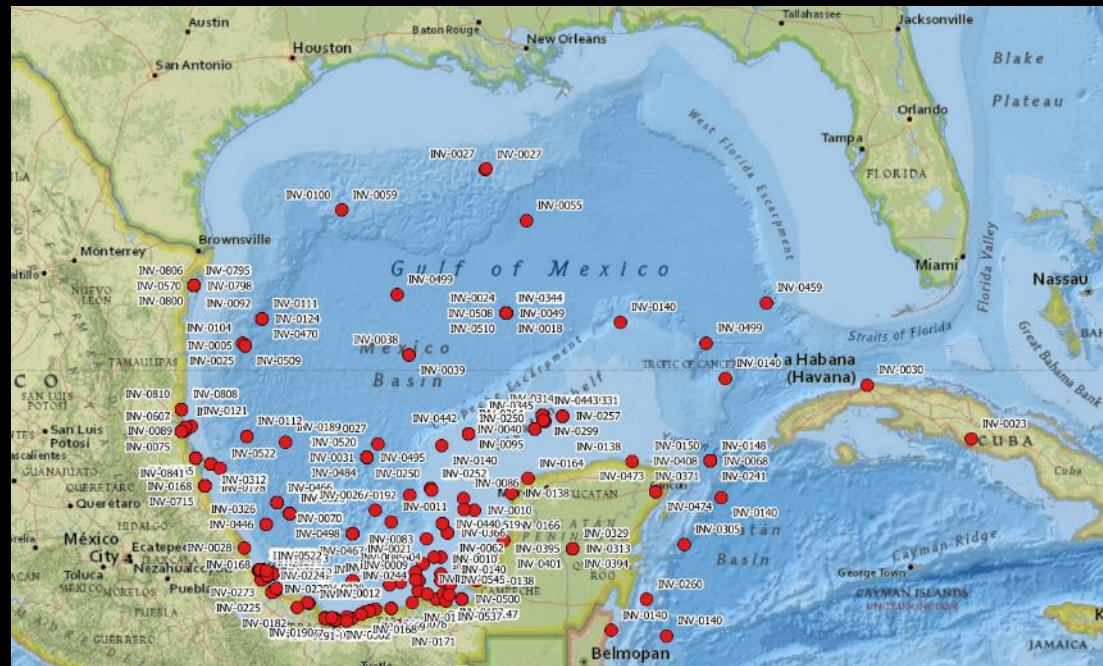
An underwater photograph of a coral reef. The water is a deep blue, and the coral is a lighter, textured blue. Several small fish are visible swimming around the coral. The scene is dimly lit, creating a serene and slightly mysterious atmosphere.

International Colleagues

- **UNAM** (Mexico City)
 - Dr. Adolfo Gracia & León González
- **CINVESTAV** (Mérida, Yucatán)
 - Dr. Víctor Vidal & Daniel Aguirre
- **CICESE** (Ensenada, Baja California)
 - Dr. Sharon Herzka & Cecilia Mozqueda
- **UAT** (Tampico, Tamaulipas)
 - Dr. Toyo Meza Conde & Sergio Gabriel Jiménez

Results so far

- ~900 literature references 😊
- ~30 research programs 😞
- ~10 data resources 😞



An underwater photograph of a coral reef. The scene is dimly lit with a blue tint. In the foreground, there are large, textured coral structures. Several small fish are visible, swimming around the coral. The background is dark and blurry, suggesting a deep underwater environment.

Main Challenges

- very short timeframe...
- contributor buy-in...
- geo footprinting...

Geo Footprinting

- use of generic names, and lack of specificity



An underwater photograph of a coral reef. The scene is bathed in blue light, with various types of coral and several small fish visible. The background is a deep blue gradient.

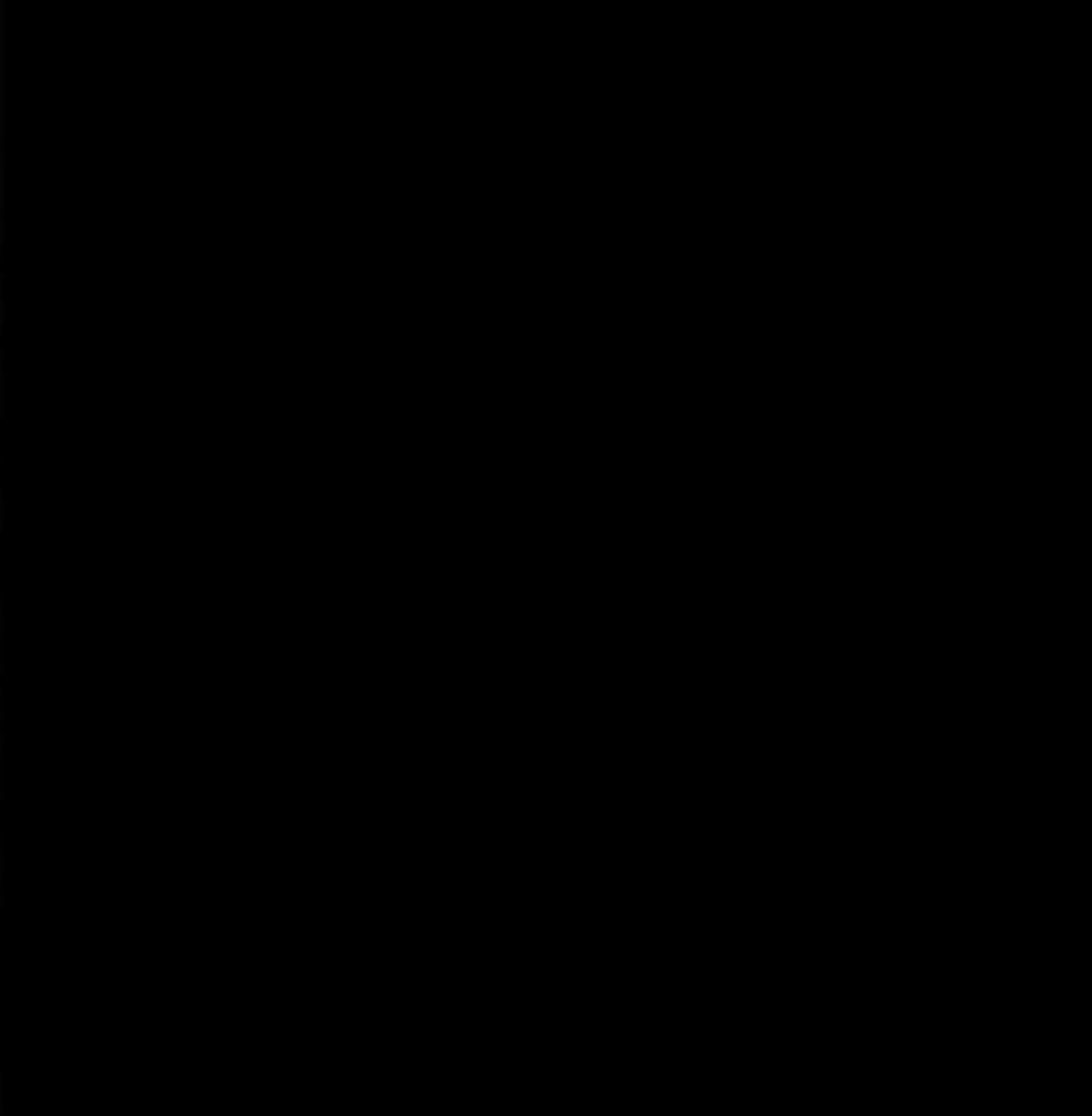
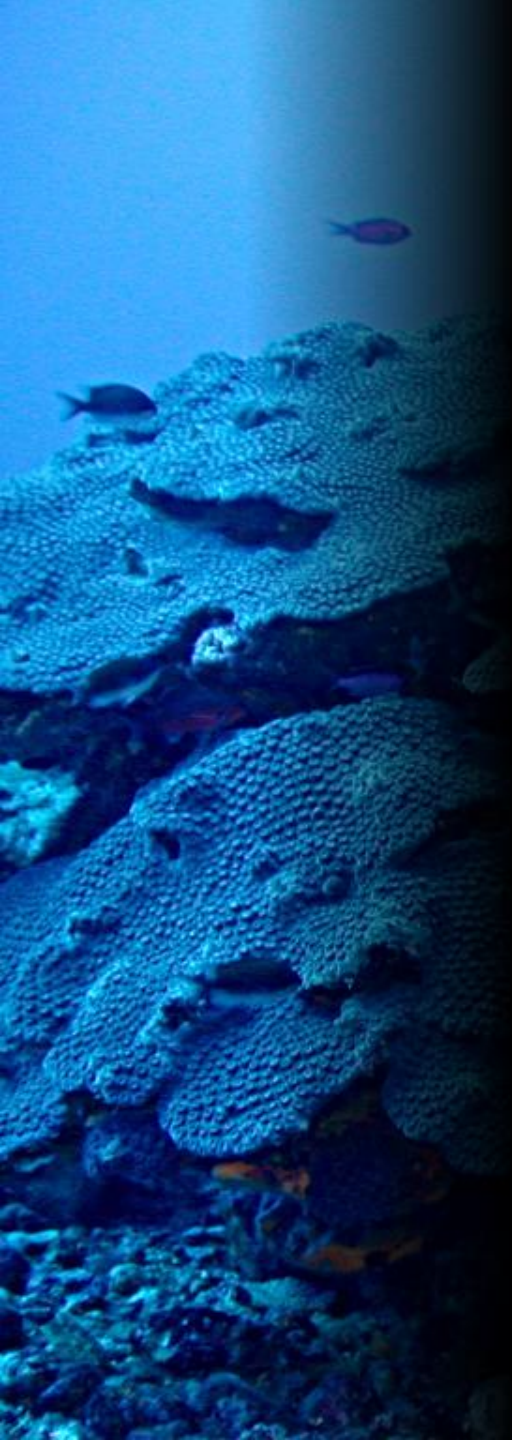
Questions to think about

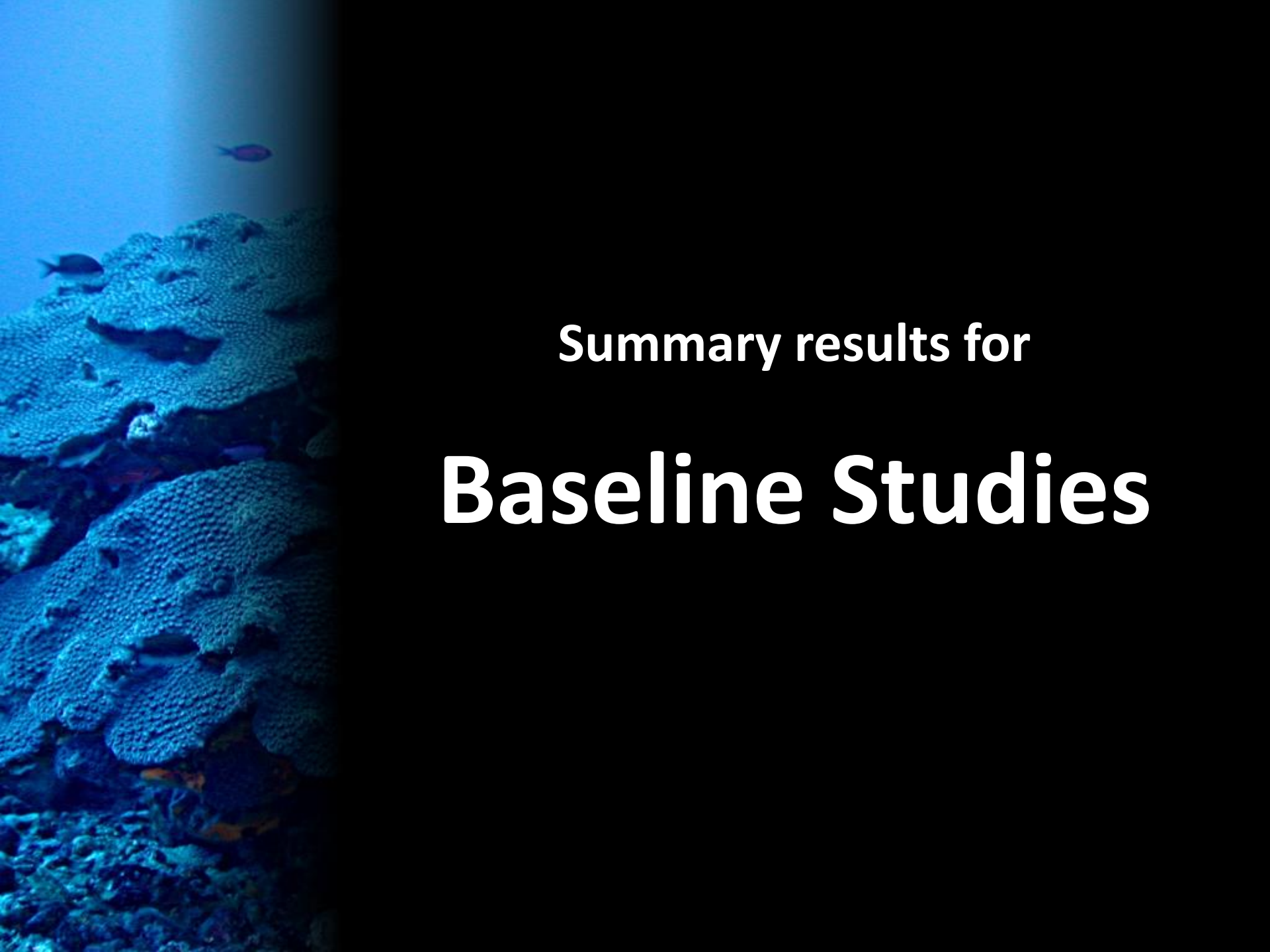
- what level of standardization (esp. Spanish→English) of terminology is needed? (e.g. nickel, níquel, or Ni)
- should database structure, fields, and controlled vocabularies be changed?
- where to put this in the long run—maybe GulfBase, GOMAportal, elsewhere?

An underwater photograph of a coral reef. The scene is dominated by blue and green hues. In the foreground, there are large, textured coral structures. Several small fish are visible, swimming in the water. The background shows a gradient of blue, suggesting depth and light penetration.

Still much to do!

- much data massaging and work with geo footprinting still needed
- continue collecting data to fill in gaps in Inventory (2004 “Diagnóstico ambiental” and 1998 “Ecología de los Ecosistemas Costeros” volumes)
- implement two way interface instead of just collecting data

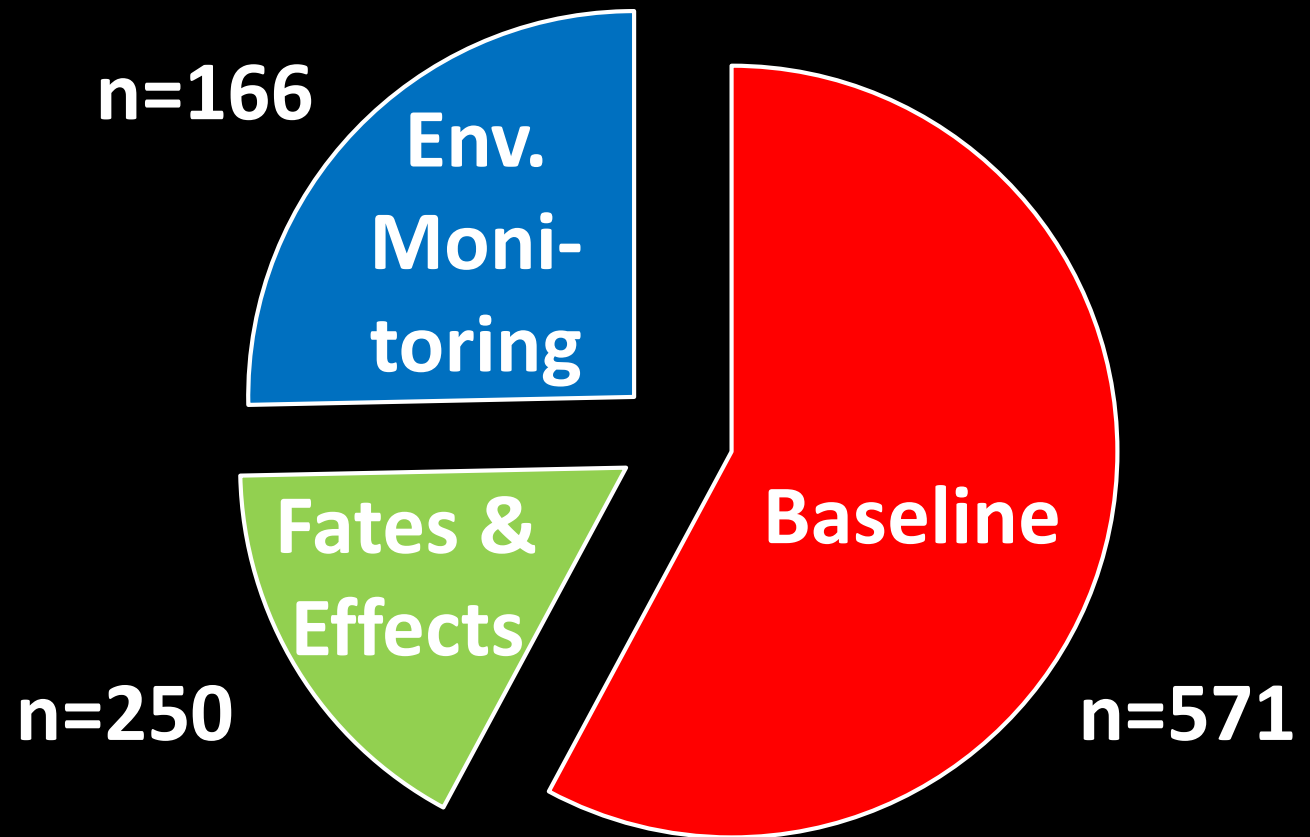




Summary results for

Baseline Studies

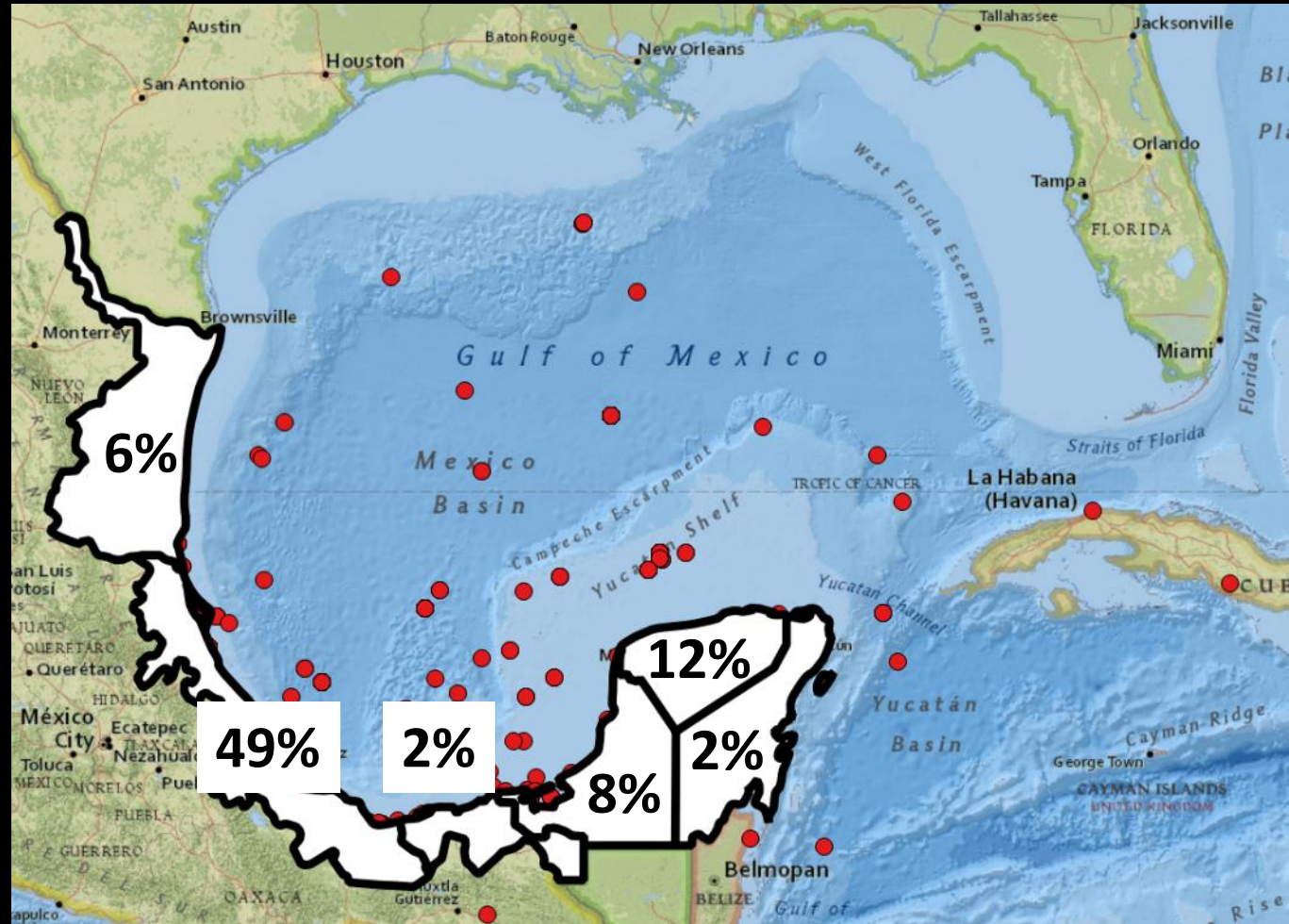
Literature records (n=897) by thematic area



Baseline Studies



Baseline Studies by MX State



An underwater photograph of a coral reef. The scene is dominated by large, flat, table-like coral structures with a porous, honeycomb-like texture. Several small, dark fish are swimming in the clear blue water above the reef. The lighting is bright, creating a clear view of the reef's structure and the surrounding water.

Baseline Top 10 Geo Footprints

Qty. Term

99 Laguna de Tamiahua

79 Gulf of Mexico

67 Laguna de Tampamachoco

34 Veracruz

31 Yucatán

29 Alacrán Reef

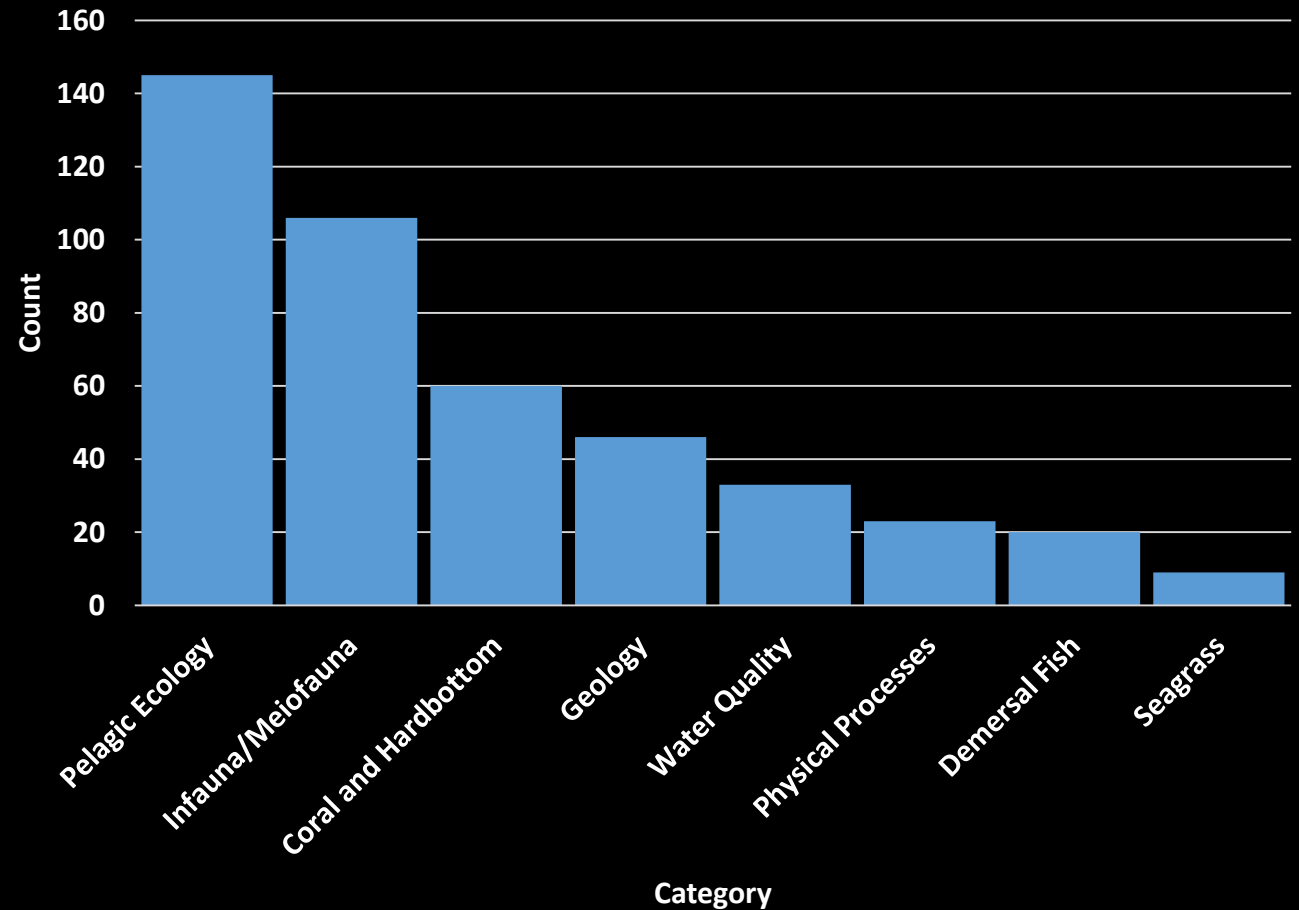
29 Laguna Pueblo Viejo

25 Laguna Madre

18 Southern Gulf of Mexico

17 Campeche Bank/Yucatán Shelf

Baseline Studies by Category



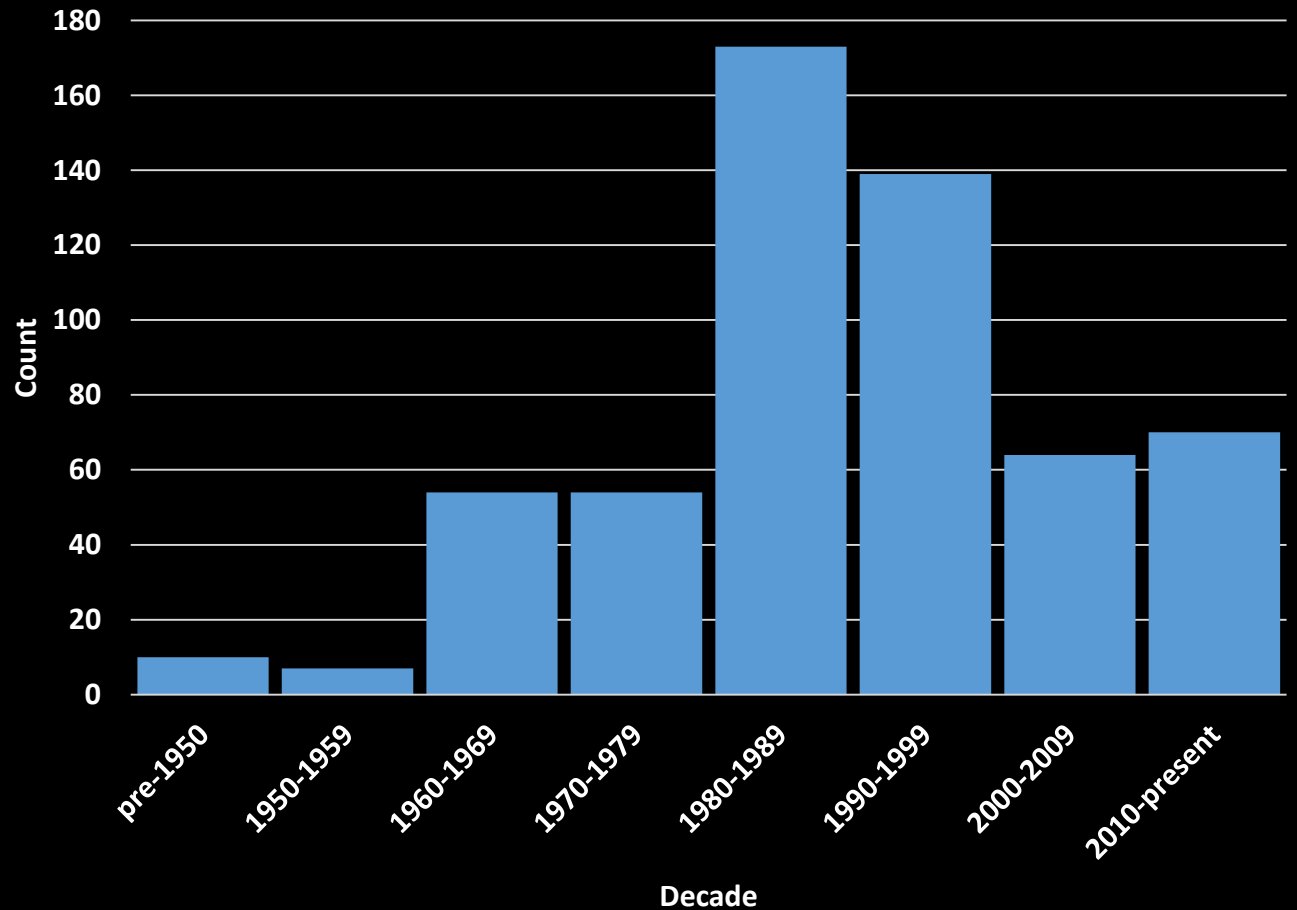
An underwater scene with a blue tint, showing a coral reef and several fish swimming. The background is dark, and the foreground shows the texture of the coral and the movement of the fish.

Baseline Top 10 Key Words

Qty. Term

100	pH
77	nekton
64	plankton
56	oceanography
53	benthos
45	Cr
35	zooplankton
29	biological oceanography
29	coral
26	fish

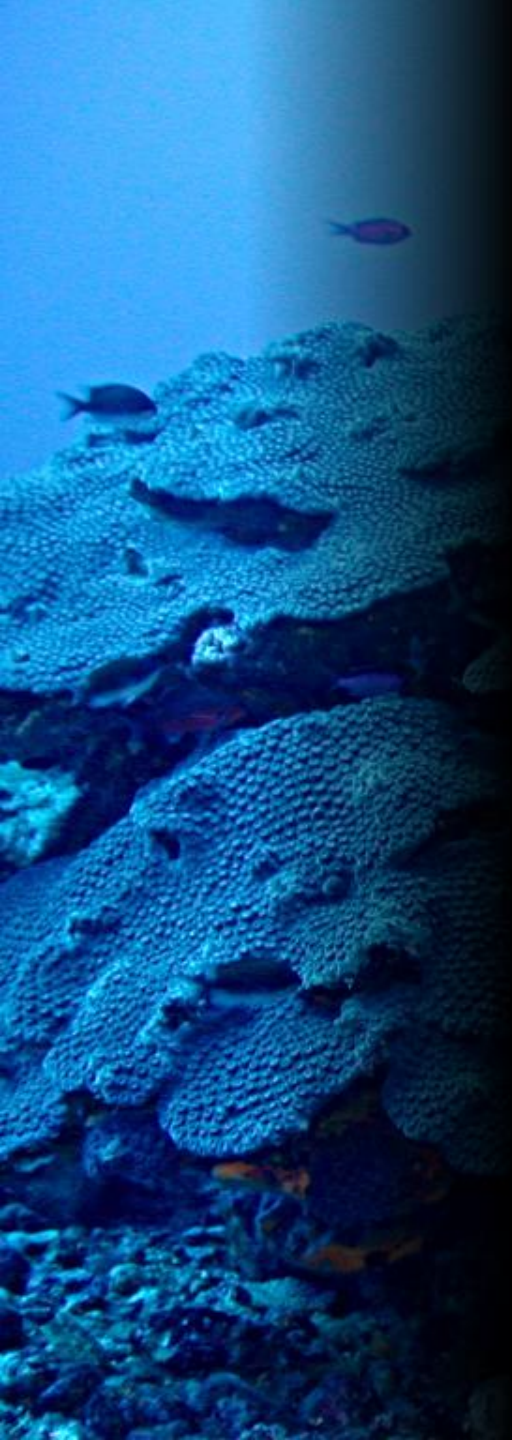
Baseline Studies by Date



An underwater photograph of a coral reef. The scene is bathed in blue light, with various types of coral and several small fish visible. The coral appears to be a mix of branching and table corals. The fish are small and dark, swimming in the clear water.

Baseline Studies final comments

- are trends in first draft Inventory real, or mostly due to bias in contributions?
- even assuming a bias in contributions, some trends seem common through all three thematic areas
 - literature focused on demersal fish, sea grass, and geology not so common
 - abundant literature about Veracruz vs. other MX states

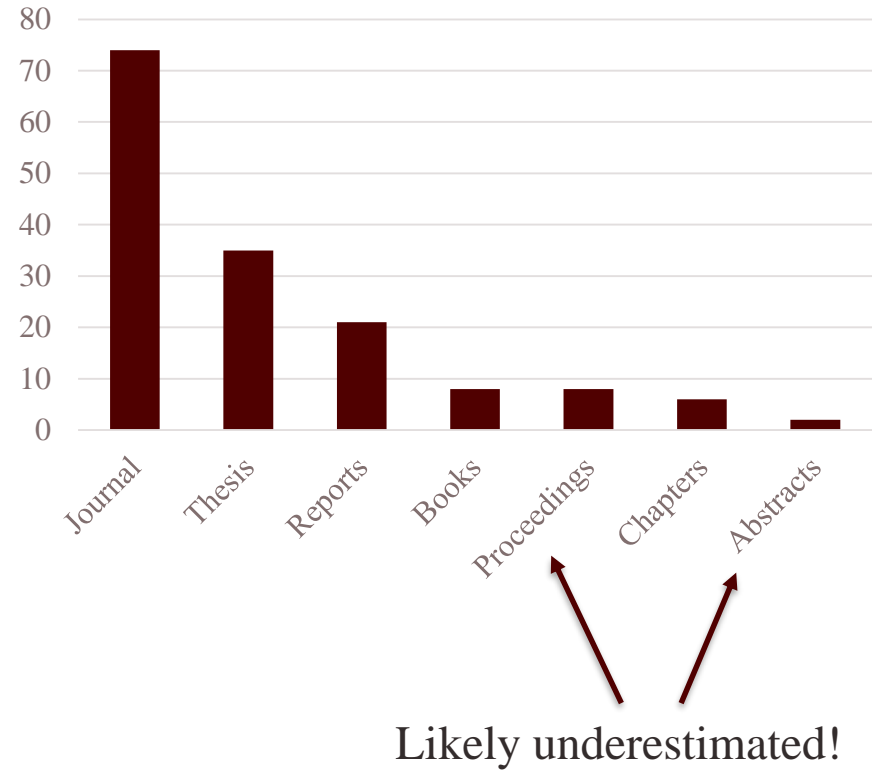


Overview of Effects Database

Gerardo Gold Bouchot
Texas A&M University

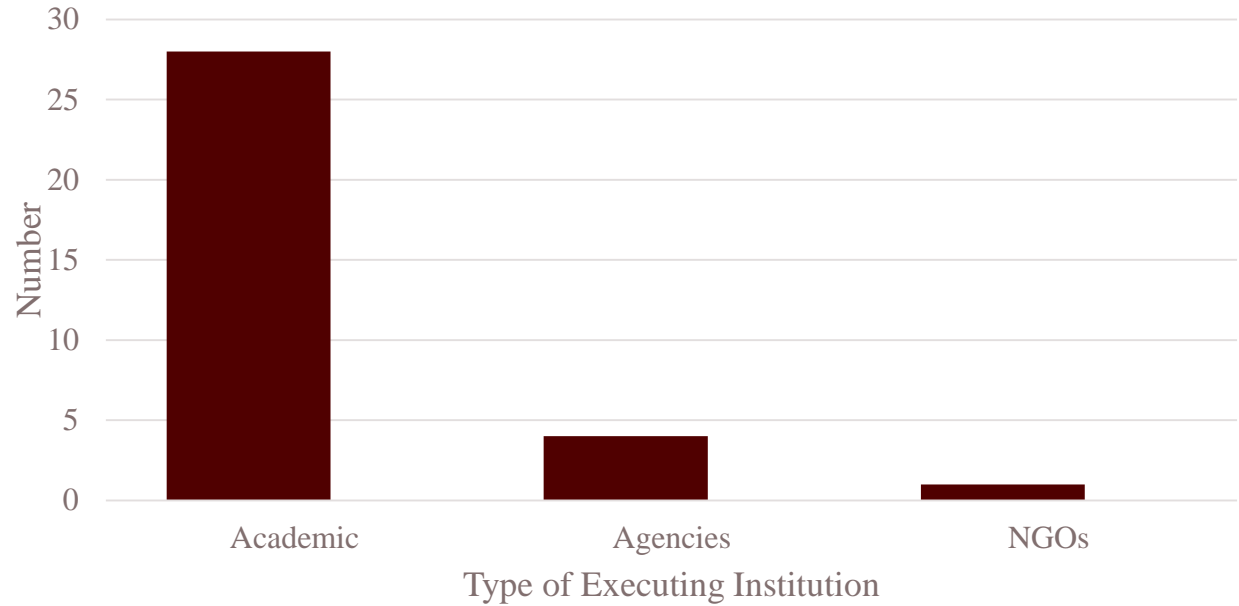
Publications

- 154 records



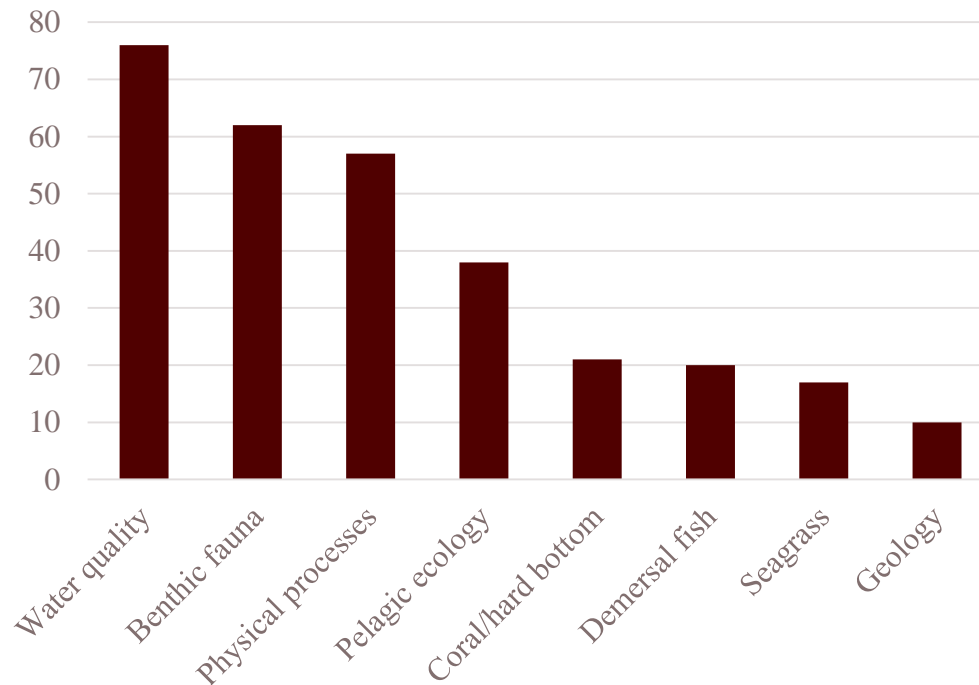
Research Programs

- 33 records
- Funded projects by:
 - Academic institutions
 - Government agencies
 - NGOs

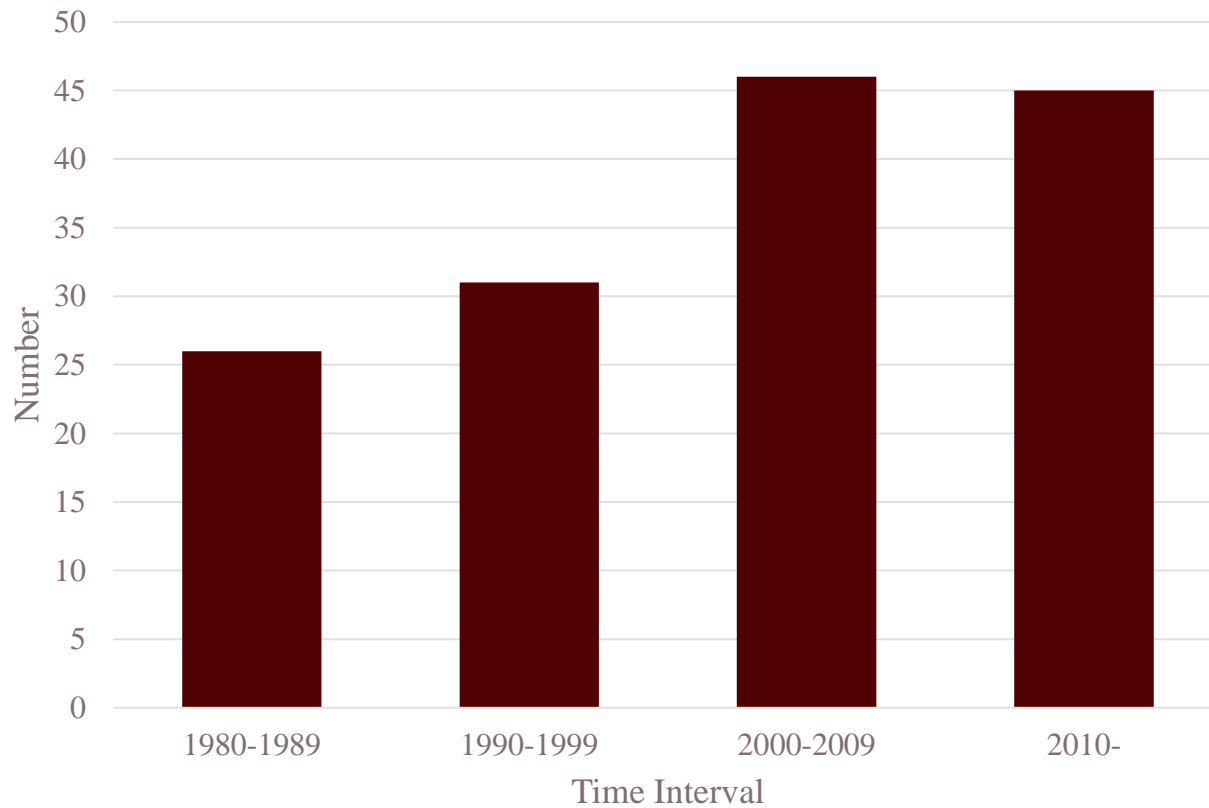


Category

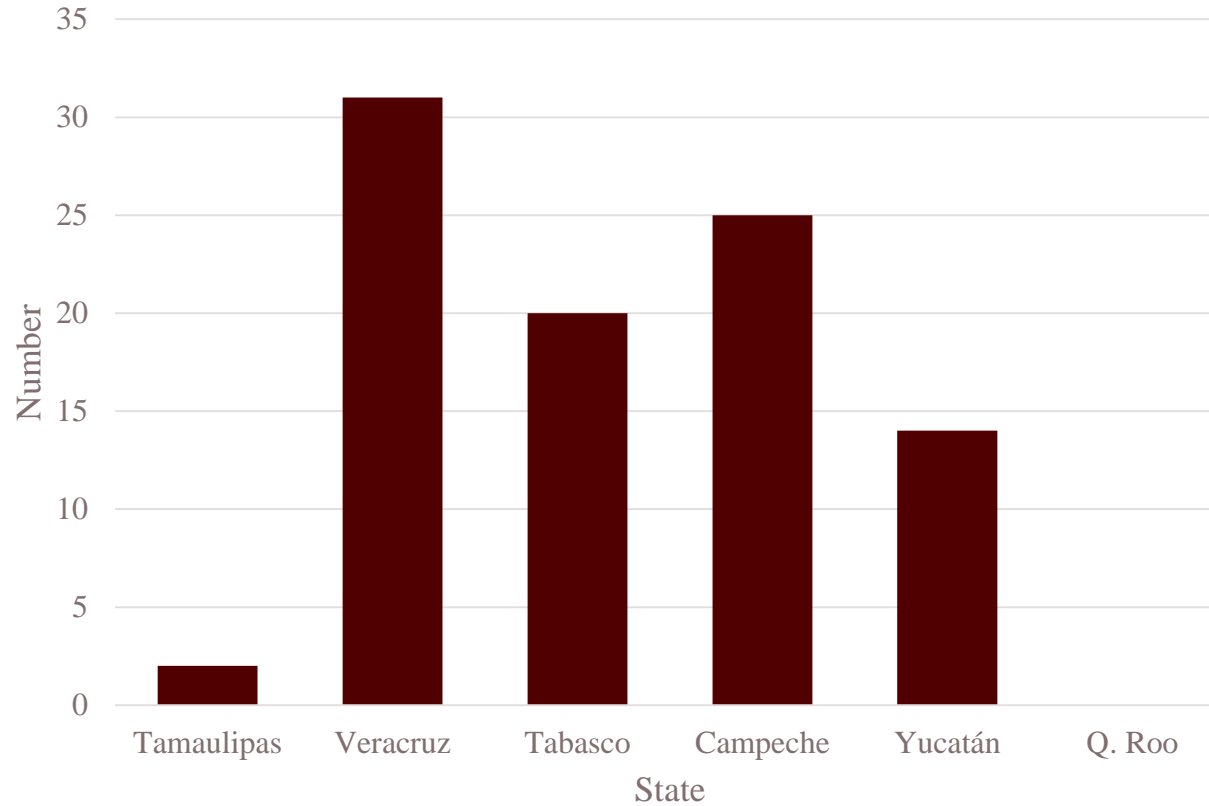
- Water quality
- Benthic fauna
- Physical processes
- Pelagic ecology
- Coral and hard bottom
- Demersal fish
- Sea grass
- Geology

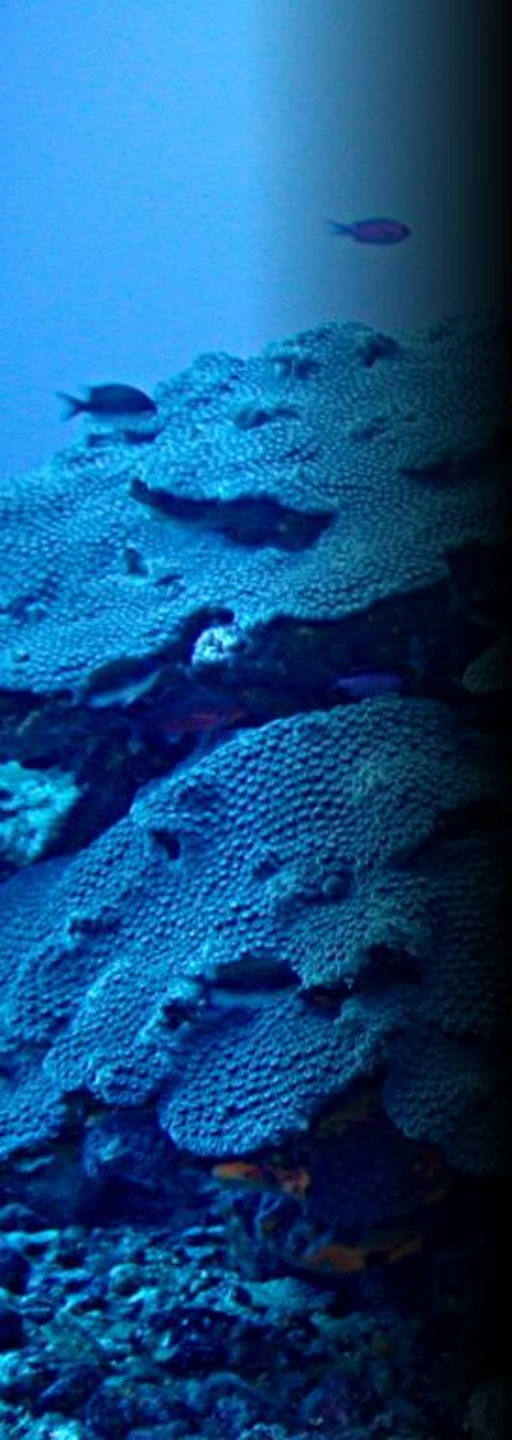


By Year



By Mexican State





An underwater photograph of a coral reef. The scene is bathed in blue light, with various coral structures and small fish visible. The text is overlaid on the right side of the image.

Summary of Environmental Monitoring Literature Resources



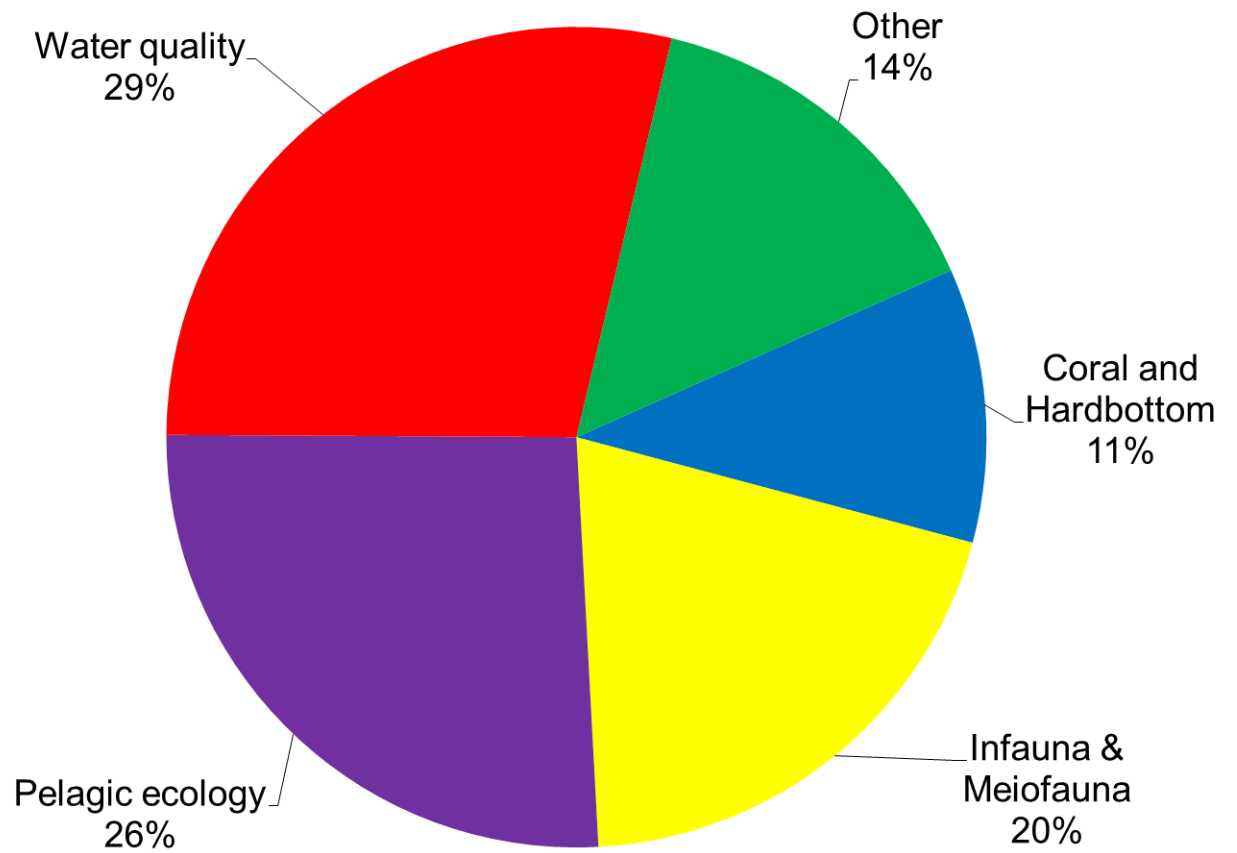
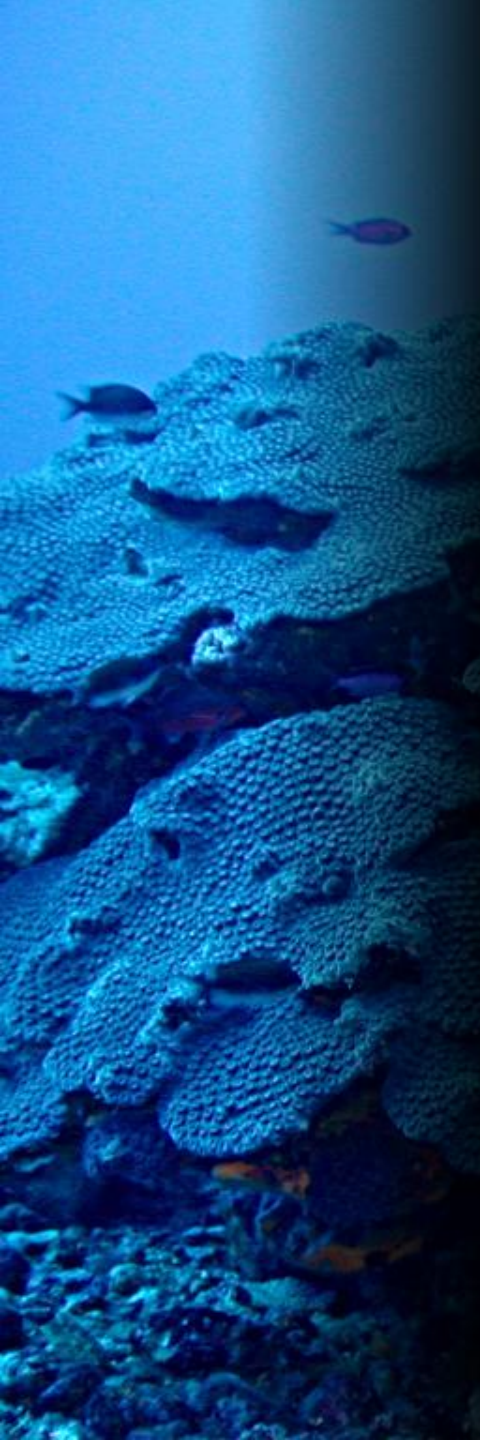
Environmental
Monitoring
27%

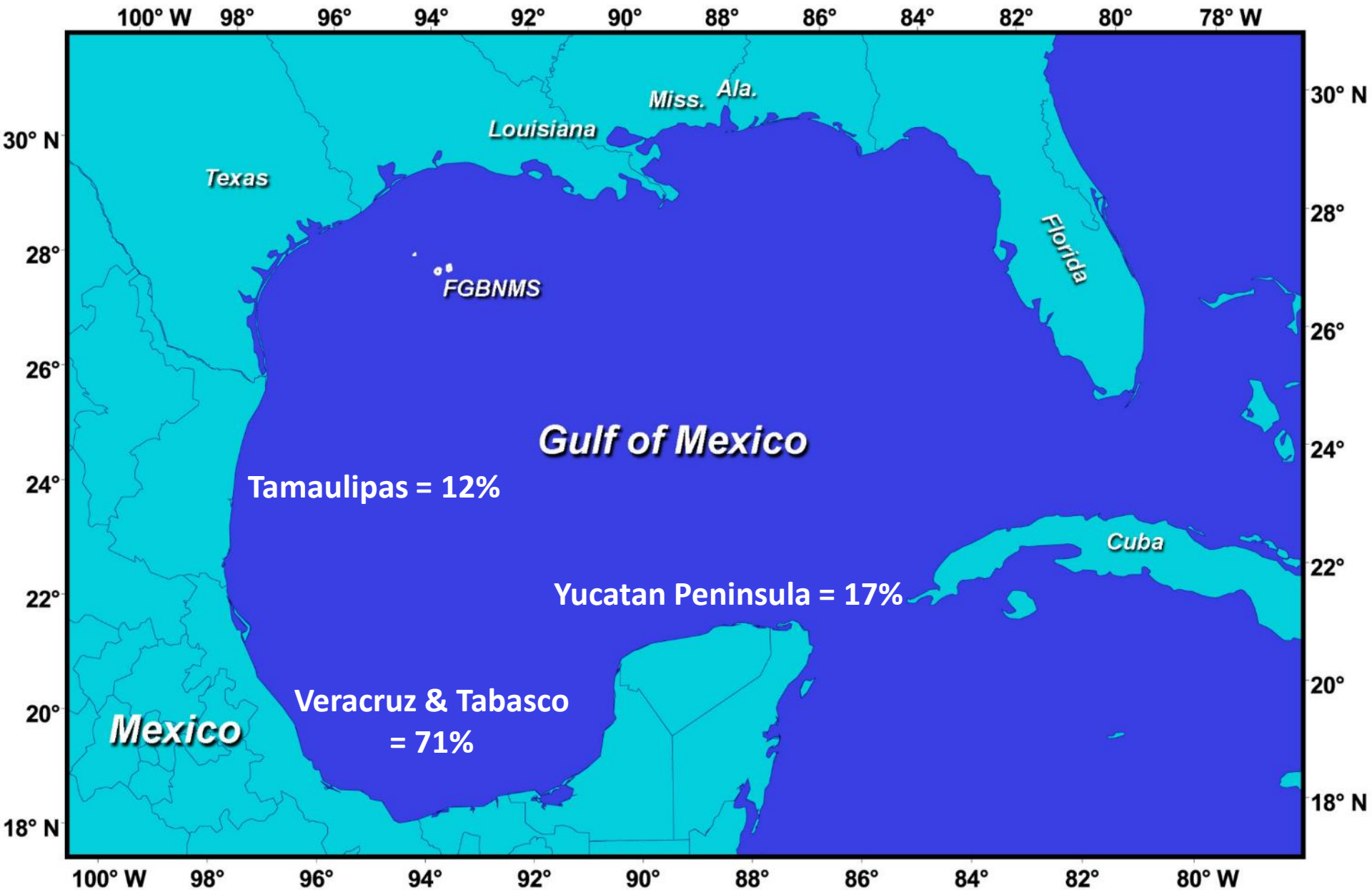


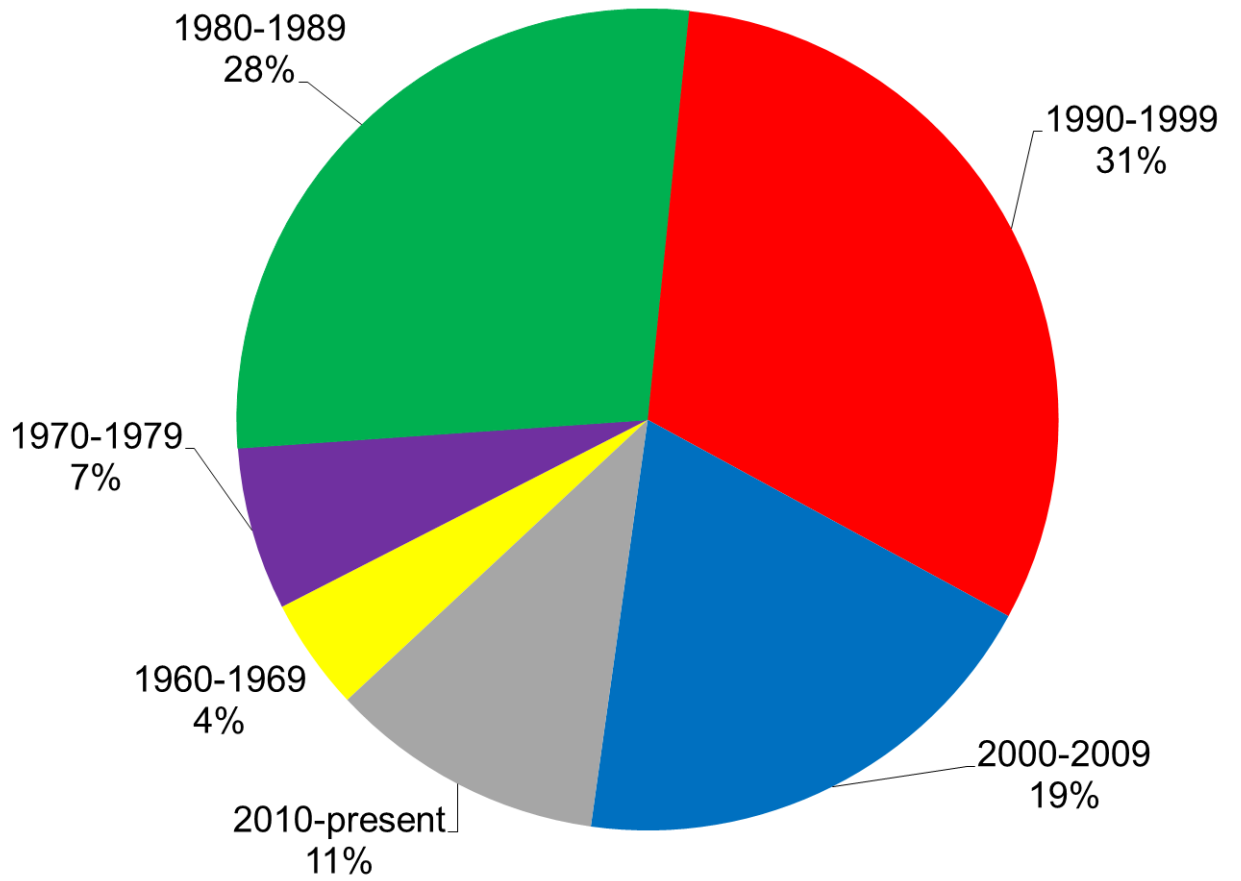
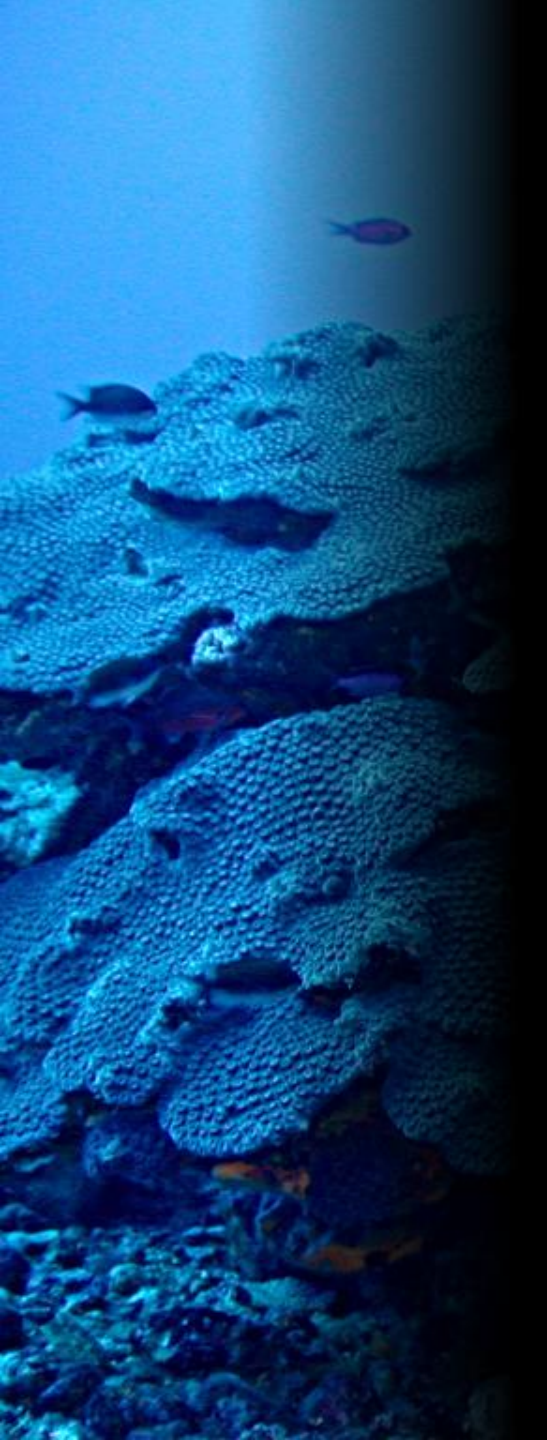
Fates & Effects
Studies
18%



Baseline
Studies
55%



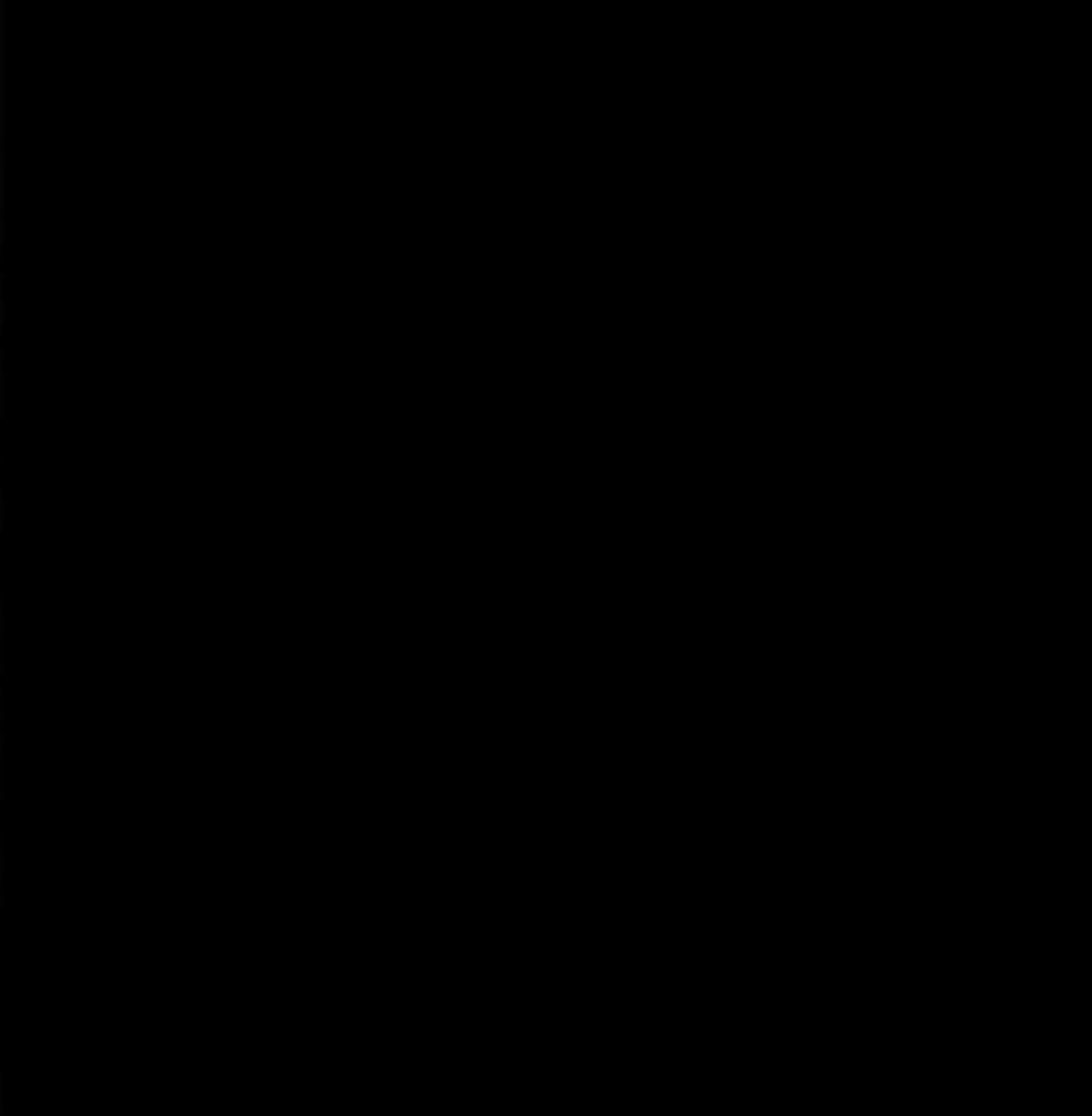
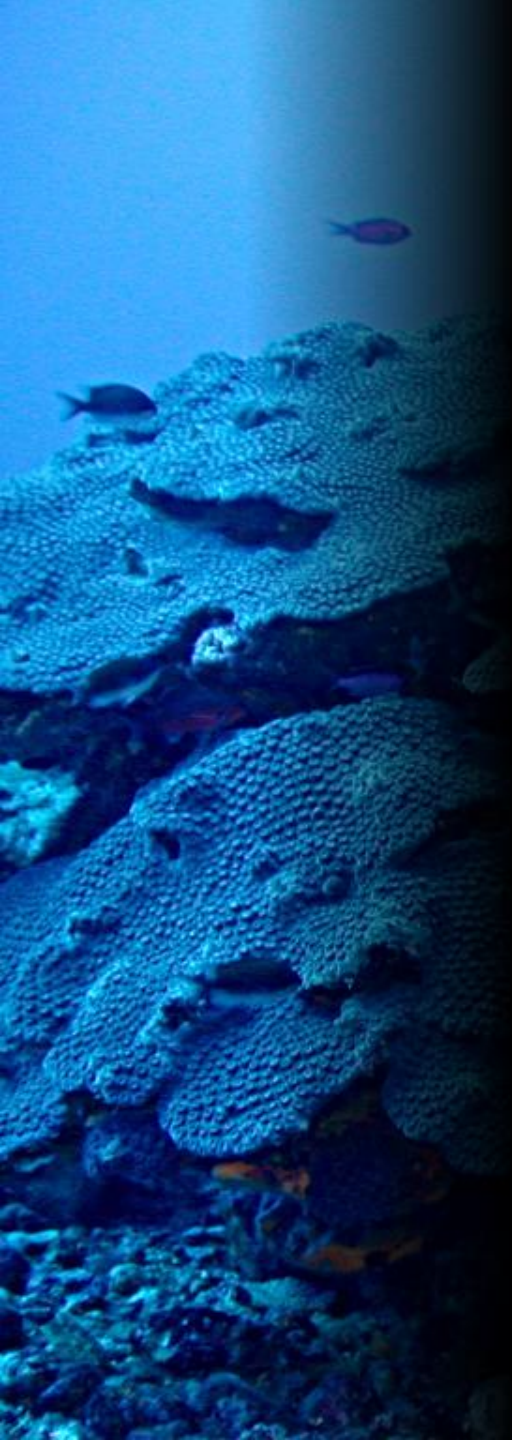




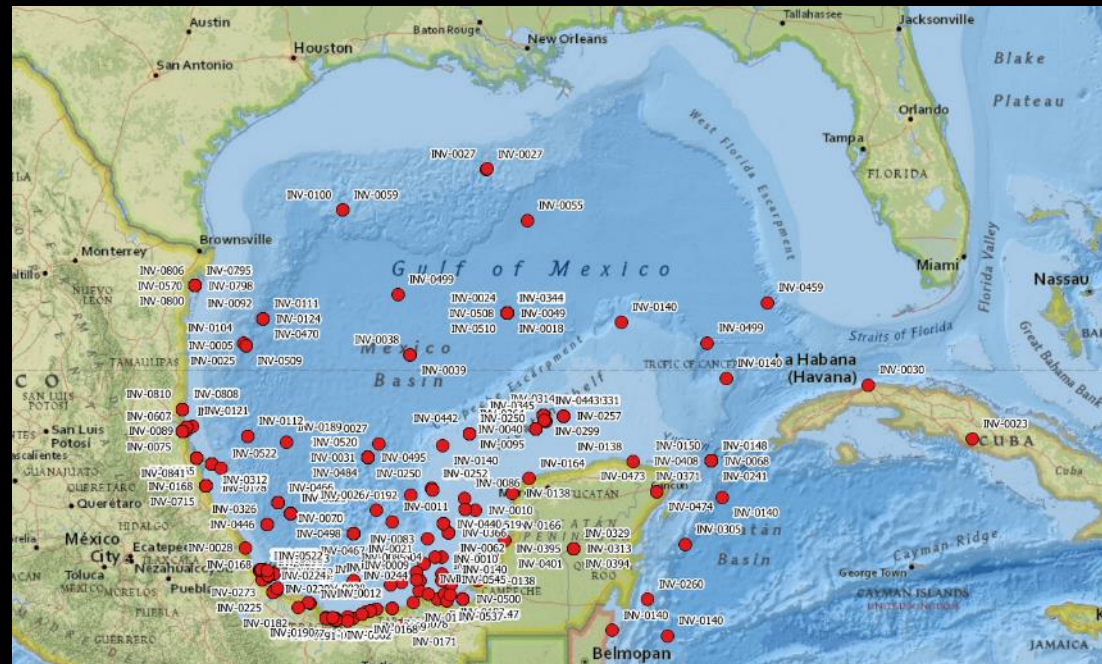
An underwater photograph of a coral reef. The scene is dimly lit with a blue tint. In the foreground, there are large, flat, porous coral structures. Several small fish are visible, swimming around the coral. The background is dark and blurry, suggesting a deep underwater environment.

Data Resources & Programs

- 13 data resources – most restricted
- ~64 research programs – most academic



Using the Inventory during the Workshop



An underwater photograph of a coral reef. The scene is dominated by large, flat, porous coral structures in shades of blue and purple. Several small fish are visible swimming in the water. The lighting is dim, creating a serene and slightly mysterious atmosphere.

Group organization for tomorrow

- three groups of ~50 participants corresponding to three thematic areas
- further subdivision into six specialty area subgroups per room

An underwater scene with a blue tint, showing a large coral reef structure in the foreground and several small fish swimming in the background. The lighting is dim, creating a serene and slightly mysterious atmosphere.

Access to Inventory

- “concise” version with six fields including:
 - Thematic Area
 - Subcategory (Subgroup)
 - Year
 - Title
 - Author
 - Key Words

An underwater scene with a blue tint, showing coral reefs and several small fish swimming. The scene is dimly lit, with light rays filtering through the water.

Access to Inventory cont.

- printed hard copies (qty. 8) at each table
- electronic access via online Google Docs spreadsheet using laptop + monitor at each table (no login needed)
- direct access to Google Doc spreadsheet or Excel spreadsheet via your own personal device

How to search Inventory (electronic version)

- do regular “Find” operation by hitting Control-F on keyboard, or using “Find in sheet” dialog box at upper right
- use data filtering
 - highlight column
 - (menu) Data → Filter Views → Create new temporary filter view
 - specify filter text using inverted triangle at column head